

# 77FTX

4x4 TRACTOR  
220 HP (164 KW) / 225 HP (168 KW)



Game Equipment LLC 3322 Hwy 308 Napoleonville, LA USA 70390-8904 Ph: 985-369-9292 Fax: 985-369-9595 [www.gameeq.com](http://www.gameeq.com)



# 77FTX

4x4 TRACTOR 220 HP (164 KW) / 225 HP (168 KW)



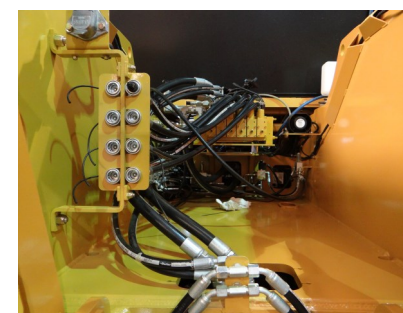
Tilting platform and hood provide unmatched access to engine, coolers, transmission, and under-hood and cab components. Both work via hand or electric pump, even when systems are down.



Engine and transmission coolers with 8 fins per inch spacing reduce buildup of debris. Hood rolls up for easy cleaning.



Individual gauges and indicators simplify operation, troubleshooting, and repair.



Built to withstand extreme applications, the frame accommodates multiple hitch configurations for high weight transfer, winches, and other equipment.

***GAME tractors are designed and manufactured from the ground up for the most demanding conditions the world has to offer. Heavy-duty industrial frames, belly pans, drivelines, powertrain components, and hitches are standard.***



Hood profile provides excellent visibility.



GAME Equipment reserves the right to change specifications without notice. Some photos may contain optional equipment.

# 77FTX

**4x4 TRACTOR 220 HP (164 KW) / 225 HP (168 KW)**

## ENGINE

- Cummins QSB 6.7, Tier III electronic engine, 220HP (164 KW) @ 2,200 RPM with 230HP (172 KW) @ 2,000 RPM bulge, Peak torque of 700 FT-LB (949 NM) @ 1,500 RPM
- Severe dust, dry, dual stage air cleaner with service indicator and pre-cleaner
- Fuel/water separator with secondary fuel filter
- Large tropical radiator, transmission, and hydraulic oil coolers are 8 fins/inch and rubber isolator mounted
- 120-gal (455-liter) steel fuel tank with lockable cap and 12-inch clean out door
- Manual hydraulic tilting hood allows easy cleaning of coolers and service of engine and under hood parts

## Export Only Option:

- John Deere 6068 HF, 225HP (168 KW) @ 2,400 RPM, 619 FT-LB (839 NM) @ 1,400 RPM mechanical engine with inline fuel pump

## TRANSMISSION

- Direct drive powershift transmission with bump shifter and inching pedal
- 8 forward/3 reverse gears
- Spring applied/Hydraulic release driveline parking brake
- Separate cooler/system isolates transmission from hydraulic system contamination

## AXLES

- All wheels are powered
- Heavy duty, outboard planetary, dual reduction axles
- Ring and pinion reduction with planetary final drives
- Front oscillating and rear rigid axles
- Internal oil bath service brakes
- Hydraulically actuated differential locking front axle
- Hydraulically actuated differential locking rear axle with independent right or left actuated brakes

## TIRES

- (2) 520/85R46 R-1W Radials (rear)
- (2) 460/85R34 R-1W Radials (front)

- Heavy duty one-piece rims

## Optional:

- (2) 710/70R42 R-1W (rear)

## CHASSIS

- Heavy duty welded frame
- Dual, double acting, heavy duty welded hydraulic cylinders for steering
- Belly pans and front pull hook
- Painted with yellow gloss finish

## STANDARD EQUIPMENT

- Engine oil pressure gauge and indicator
- Engine coolant temperature gauge and indicator
- Voltage gauge
- Fuel gauge
- Tachometer with hour meter
- Low hydraulic oil level light/indicator
- Transmission oil temperature gauge and indicator
- Transmission pressure gauge and indicator
- Oil filter service warning light

## ELECTRICAL

- (2) 12-VDC, 950 CCA, 180 RC Group 31XHE heavy duty maintenance free commercial batteries
- 12-Volt DC, 160-Amp alternator
- Horn, reverse alarm, and master disconnect switch
- Four LED headlights in hood
- Two adjustable front and two rear/side LED work lights
- Two LED work lights in rear bumper
- Brake and indicator lights in rear bumper with warning lights top of cab (viewable front and rear)
- Strobe light
- 7-pin electrical connector capable of multiple trailer operation

## OPERATOR'S STATION

- ROPS/FOPS certified A/C cab with rear wiper
- AM/FM radio, marine grade, with USB, AUX port and Bluetooth

- Manual hydraulic tilting cab platform for transmission, engine, and component service
- Adjustable tilt and telescopic steering column
- Vinyl cushion mechanical suspension seat with position adjustment and armrests

## Optional:

- Leather, heated/ventilated, toggle link, semi-active suspension with fully adjustable air ride, backrest, lumbar, head and arm rests seat; 20-degree swivel right, 60-degree swivel left
- Electric cab/hood tilt
- Training seat

## HYDRAULIC SYSTEM

- Open center pump for brakes, steering, and implement valve
- 39-gal (148 L) pressurized hydraulic tank with 100% filtration and 12-inch clean out door
- Manual 4 Bank valve (1 motor spool with detent, 3 cylinder spools)
- Hydraulic brakes with accumulator to provide braking during engine down emergencies

## MISC OPTIONS

- Hydraulic brake ports on rear for trailer
- Front push bumper
- Heavy duty fixed/swinging drawbar
- Welded rear extension with pintle hook
- Category III, 3-point hitch with float and draft assist
- PTO
- Fire extinguisher

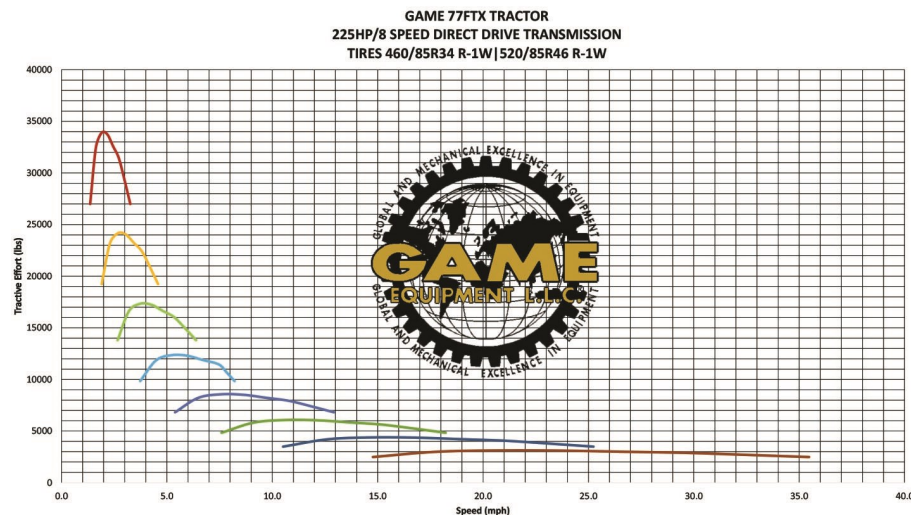
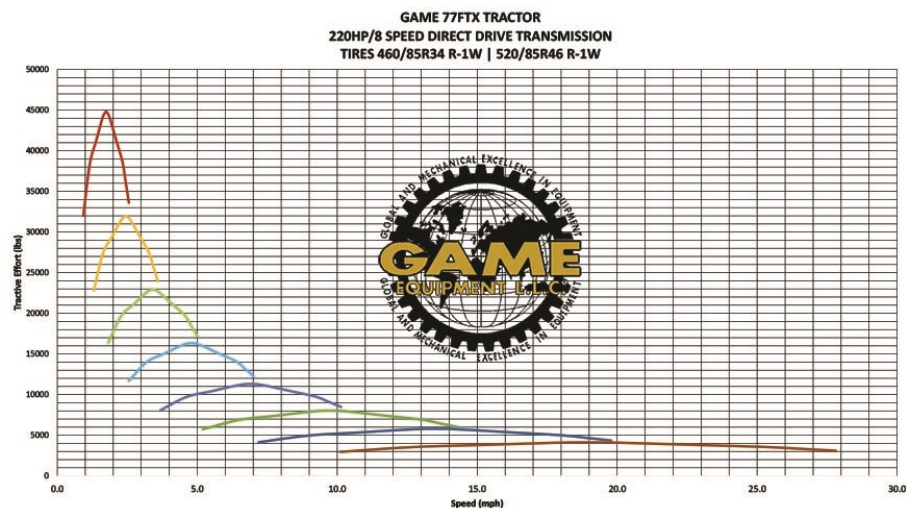
2/13/2019

GAME Equipment reserves the right to change specifications without notice. Some photos may contain optional equipment.



# 77FTX

4x4 TRACTOR 220 HP (164 KW) / 225 HP (168 KW)



## Specifications:

### Unladen Tractor Weight

### Unladen Weight Distribution

### Steering

### Shipping

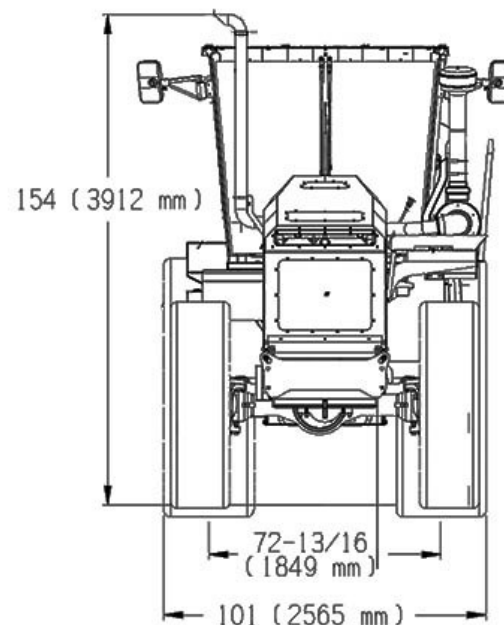
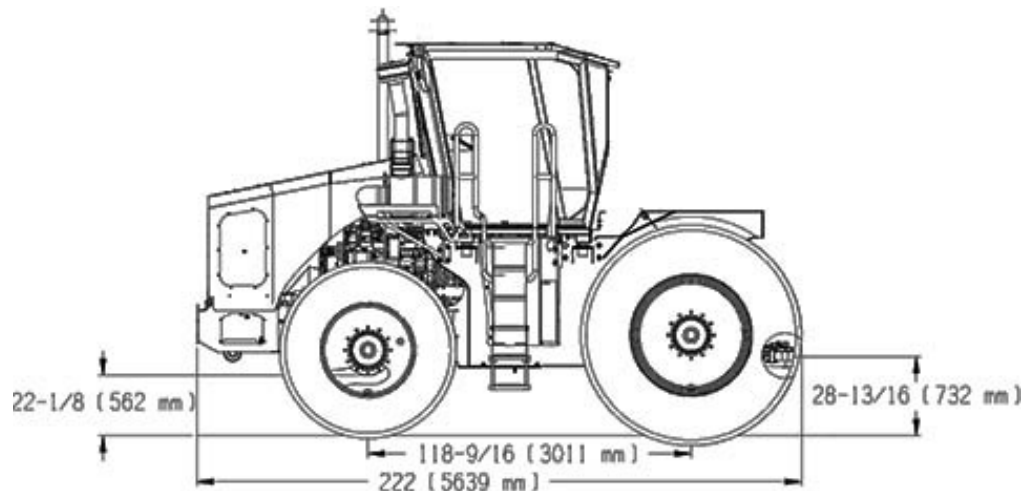
19,000–23,000 lbs (8,635 - 10,454 kg)

58% Front Axle 42% Rear Axle

Inner Turning Radius: 180" (4572 mm) 153" W/Brake (3886 mm)

Outer Turning Radius: 302" (7670 mm)

Export - 1 Tractor per standard high cube 40' container



GAME Equipment reserves the right to change specifications without notice. Some photos may contain optional equipment.