

77WTX

4x4 ARTICULATED TRACTOR
220 HP (164 KW) / 225 HP (168 KW)



Game Equipment LLC 3322 Hwy 308 Napoleonville, LA USA 70390-8904 Ph: 985-369-9292 Fax: 985-369-9595 www.gameeq.com

77WTX

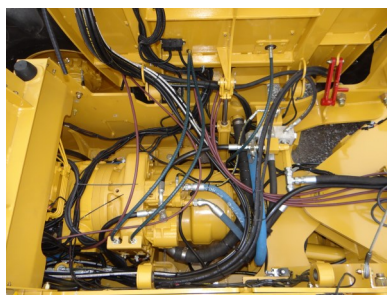
4x4 ARTICULATED TRACTOR 220 HP (164 KW) / 225 HP (168 KW)



Engine and transmission coolers with 8 fins per inch spacing reduce buildup of debris. Hood rolls up for easy cleaning.



Individual gauges and indicators simplify operation, troubleshooting and repair.



GAME tractors are designed and manufactured from the ground up for the most demanding conditions the world has to offer. Industrial frames, belly pans, articulation, drivelines, powertrain components, and hitches are standard.



Tilting platform and hood provide unmatched access to engine, coolers, transmission, and under hood and cab components. Both work via hand pump even when systems are broken.



Extreme heavy duty upper and lower articulation joint with radial spherical bearings, oversized hardened pins, and welded cylinders with bushings.



Hood profile provides excellent visibility.



Built to withstand extreme applications, the frame accommodates multiple hitch configurations for high weight transfer, winches, and other equipment.

GAME Equipment reserves the right to change specifications without notice. Some photos may contain optional equipment.

77WTX

4x4 ARTICULATED TRACTOR 220 HP (164 KW) / 225 HP (168 KW)

ENGINE

- Cummins QSB 6.7, Tier III electronic engine, 220HP (164 KW) @ 2,200 RPM and 700 FT-LB (949 NM) @ 1,500 RPM
- Severe dust, dry, dual stage air cleaner with service indicator and pre-cleaner
- Fuel/water separator with secondary fuel filter
- Large tropical radiator, transmission, and hydraulic oil coolers are 8 fins/inch and rubber isolator mounted
- 80-gal (302-liter) steel fuel tank with lockable cap and 12-inch clean out door
- Manual hydraulic tilting hood allows easy cleaning of coolers and service of engine and under hood parts

Export Only Option:

- John Deere 6068HF, 225HP (168 KW) @ 2,400 RPM, 619 FT-LB (839 NM) @ 1,400 RPM mechanical engine with inline fuel pump

TRANSMISSION

- Manually controlled, converter driven, 4-speed power shift with lockup in all gears
- Power shift allows shifting under full engine power
- Mechanical drum parking brake on output shaft
- Separate cooler/system isolates transmission from hydraulic system contamination

Optional:

- 8 speed, direct drive, electronically controlled powershift transmission - 8F/3R

AXLES

- All wheels are powered.
- Heavy duty, dual reduction, wide flange to flange
- Accommodates 3-meter single or dual tire centers
- Ring and pinion reduction with planetary final drives
- No spin rear, limited slip front differentials
- Oscillating front axle, rigid rear axle
- Internal oil bath service brakes
- 7C mechanical drivelines

CHASSIS

- Heavy duty welded frame

- Articulating joint with heavy duty radial spherical bearings and large hardened pins
- Dual, double acting, heavy duty welded hydraulic steering cylinders with bushings
- Full belly pans and front pull hook
- Painted with yellow gloss finish

STANDARD EQUIPMENT

- Engine oil pressure gauge and indicator
- Engine coolant temperature gauge and indicator
- Voltage gauge
- Fuel gauge
- Tachometer with hour meter
- Low hydraulic oil level light/indicator
- Transmission oil temperature gauge and indicator
- Transmission pressure gauge and indicator
- Oil filter service warning light
- Hand and foot throttle

ELECTRICAL

- (2) 12-VDC, 950 CCA, 180 RC Group 31XHE heavy duty maintenance free commercial batteries
- 12-Volt DC, 160-Amp alternator
- Horn, reverse alarm, & master disconnect switch
- Four LED headlights in hood
- Two adjustable front and two rear/side LED work lights
- Two LED work lights in rear bumper
- Brake and indicator lights in rear bumper with warning lights top of cab (viewable front and rear)
- Strobe light

OPERATOR'S STATION

- Open station with welded steel canopy top
- Vinyl mechanical suspension seat with position adjustment and armrests
- Adjustable tilt and telescopic steering column
- Manual hydraulic tilting platform

Optional:

- ROPS certified A/C cab with rear wiper, with AM/FM radio, marine grade, USB, AUX port and Bluetooth

- Training seat
- Leather, heated, toggle link fully adjustable air ride suspension seat with armrests, 20-degree swivel right, 60-degree swivel left
- Electric cab/hood tilt

HYDRAULIC SYSTEM

- Open center pump for brakes, steering, and implement valve
- 39-gal pressurized hydraulic tank with 100% filtration and 12-inch clean out door
- 2 bank, cylinder spools, open center valve
- Accumulator for emergency braking

MISC OPTIONS

- Cable operated 4-bank control valves
- Air compressor, tank, trailer park and service brakes via foot & lever
- 7-pin electrical connector capable of multiple trailer operation
- Hydraulic brake ports on rear for trailer
- Heavy duty fixed/swinging drawbar
- Welded rear extension with pintle hook
- Category III, 3-point hitch
- 3-point hitch draft/height control
- Fifth wheel hitch
- Regular or inverted 4-inch gooseneck ball
- 40,000-lb hydraulic winch on rear frame
- Front push bumper
- Fire extinguisher

TIRES

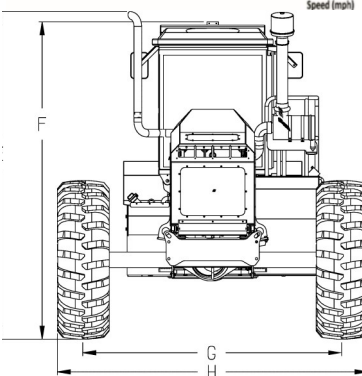
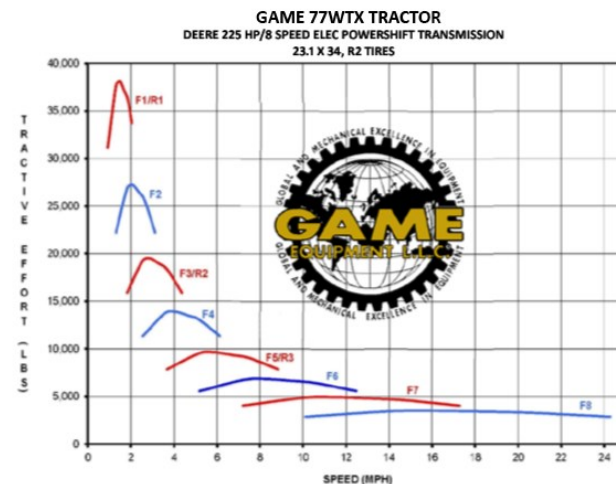
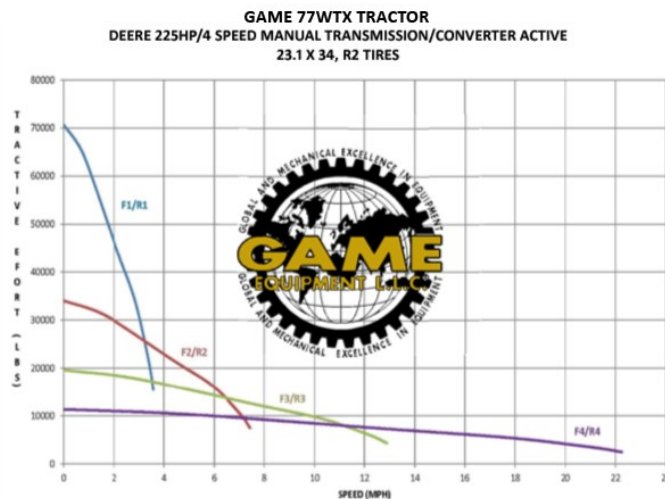
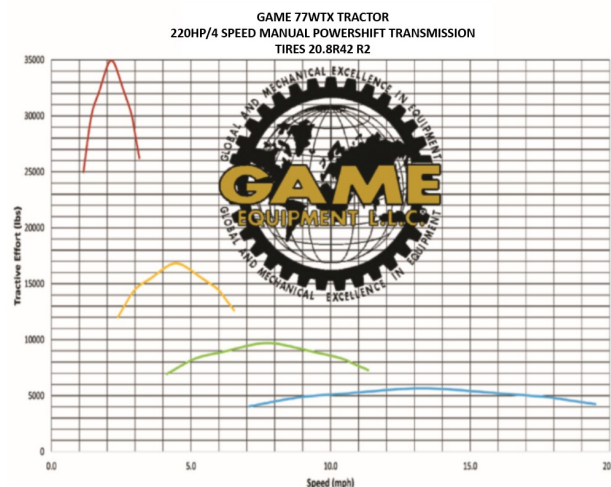
- (4) 23.1X26, R1, 12-PLY
- Heavy duty one piece rims

Optional:

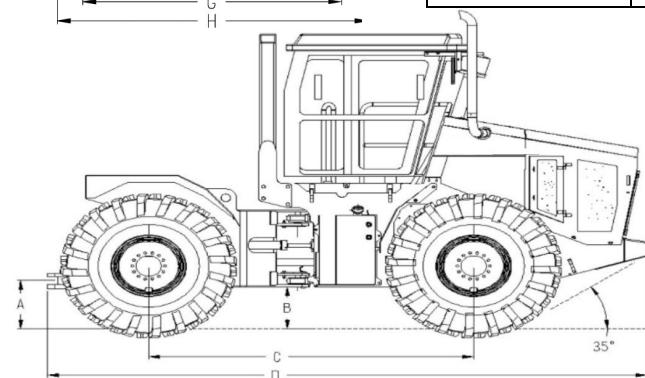
- 23.1X26, R2, 12-PLY
- 23.1X34, R1
- 23.1X34, R2, 12-PLY
- 710/70R38, R-1W
- 520/85R42, R-2

GAME Equipment reserves the right to change specifications without notice. Some photos may contain optional equipment.

77WTX 4x4 ARTICULATED TRACTOR 220 HP (164 KW) / 225 HP (168 KW)



TIRE SIZE	A - IN(MM)	B - IN(MM)	C - IN(MM)	D - IN(MM)	E - IN(MM)	F - IN(MM)	G - IN(MM)	H - IN(MM)
23.1X26 R1 12PLY	21.7 (552)	18.9 (479)	120 (3048)	221.3 (5622)	143.5 (3644)	133.1 (3381)	118 (2997)	142.1 (3609.3)
23.1X26 R2 12PLY	22.5 (571.5)	19.7 (500.4)	120 (3048)	221.3 (5622)	144.3 (3665.2)	133.9 (3401.1)	118 (2997)	141.8 (3601.7)
23.1XR34 R1	26.4 (671)	23.5 (598)	120 (3048)	221.3 (5622)	148.2 (3763)	137.8 (3500)	118 (2997)	141.5 (3594.1)
23.1X34 R2 12PLY	26.5 (673.1)	23.7 (601.9)	120 (3048)	221.3 (5622)	148.3 (3766.8)	137.9 (3502.6)	118 (2997)	142.3 (3614.4)
710/70 R38 R-1W	28.7 (729)	25.9 (657.9)	120 (3048)	221.3 (5622)	150.5 (3822.7)	140.1 (3558.5)	118 (2997)	146.9 (3731.3)
520/85R42 R2	27.3 (693.4)	24.5 (622.3)	120 (3048)	221.3 (5622)	149.1 (3787.1)	138.7(3523)	118 (2997)	138.8 (3525.5)



Specifications:

Unladen Tractor Weight 20,000–24,000 lbs (9,072-10,886 kg)

Unladen Weight Distribution 58% Front Axle 42% Rear Axle

Steering on 23.1x34 tires

Inner Turning Radius	133" (3378 mm)
SAE Turning Radius	228" (5791 mm)
Clearance Radius	240" (6096 mm)

GAME Equipment reserves the right to change specifications without notice. Some photos may contain optional equipment.