

95ATX

4x4 TRACTOR 475HP (354KW) BULGE TO 512HP (373KW)



Game Equipment LLC 3322 Hwy 308 Napoleonville, LA USA 70390-8904 Ph: 985-369-9292 Fax: 985-369-9595 www.gameeq.com

95ATX

4x4 TRACTOR 475HP (354KW) BULGE TO 512HP (373KW)



Tilting cab and hood provide unmatched service to the entire unit.



Outer tires removed reveal the large wheel-end. Bearings are centered between the duals on the industrial axes.

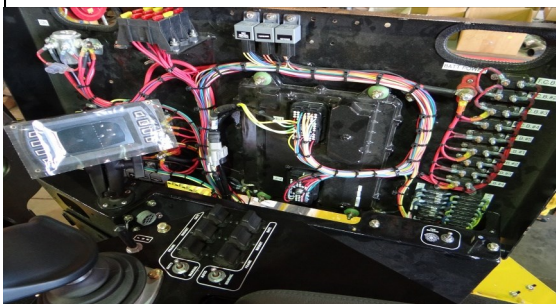


Proportional controlled, hydraulically driven reversing fan stays clean and saves fuel.

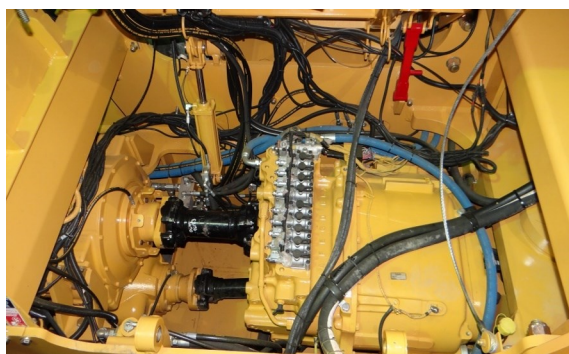
GAME tractors are designed and manufactured from the ground up for the most demanding conditions the world has to offer. Heavy-duty industrial frames, belly pans, articulation joint, drivelines, powertrain components, and hitches are standard.



Unmatched access to engine coolers and components.



Multi-function electronic system monitor and simple electrical system.



Tilting cab provides unmatched access to powertrain and hydraulic components.



Unmatched electrical service from the seat, which rotates 60 degrees and has the best vision to the scraper in the industry.

GAME Equipment reserves the right to change specifications without notice. Some photos may contain optional equipment.

95ATX

4x4 TRACTOR 475HP (354KW) BULGE TO 512HP (373KW)

ENGINE

- Caterpillar C15, Tier III electronic engine, 475HP (354 KW) @ 2,200 RPM with 512HP, (373 KW) @ 1,800 to 1,900 RPM bulge, Peak torque of 1,685 LB-FT (2,286 NM) @ 1,400 RPM
- Severe dust, dry, dual stage air cleaner with service indicator pre cleaner with automatic dust ejector
- 375-gal (1,420 L) steel fuel tank with lockable cap and 12-inch clean out door
- High capacity, 10-micron primary fuel/water separator, with dual 2-micron secondary fuel filter
- Large tropical radiator, transmission and hydraulic oil coolers are 8 fins per inch and rubber isolator mounted
- Manual hydraulic tilting hood allows easy cleaning of coolers and service of engine and under hood components

TRANSMISSION

- Electronically controlled, direct drive, 16-speed powershift, 4 reverse
- Independent oil cooler and system isolates contamination from all other sources providing long transmission life
- Spring applied/hydraulic release driveline parking brake

AXLES

- All wheels are powered
- Heavy duty, outboard planetary, dual reduction axles
- Ring and pinion reduction with planetary final drives
- Limited slip front differentials
- No spin "Detroit locker" rear differentials
- Internal oil bath service brakes
- Heavy duty mechanics driveline

TIRES

- (8) 710/70R42, R-1W
- Heavy duty flange mounted dual one-piece rims
- Rim design allows for removal of outer tire/rim assembly without removing inner tire/rim assembly

Optional:

- (8) IF710/70R42, R-1W
- (4) LSW1250/35R46, R-1W
- (8) LSW710/60R46, R-1W

- (8) LSW800/55R46, R-1W

CHASSIS

- Heavy duty welded frame
- Articulating joint with heavy duty welded radial spherical bearings and large hardened pins
- Dual double acting heavy duty welded hydraulic steering cylinders for steering
- Full belly pans and front pull hook
- Painted with yellow gloss finish
- Operating weight of 65,000-75,000 LB (29,483,- 34,019 KG)

STANDARD EQUIPMENT

- 6-inch color display for monitoring and diagnostics
- Engine coolant and oil monitoring and warning
- Voltage monitoring
- Fuel gauge
- Tachometer with hour meter
- Hand and foot throttle
- Low hydraulic oil level buzzer/light
- Transmission oil temperature gauge and warning light
- Transmission clutch pressure gauge and warning
- Hydraulic and transmission oil filter service warning light

ELECTRICAL

- 12-Volt DC engine system, 160 Amp alternator
- 12-Volt DC roadway, turning, and warning lights
- (4) 12-VDC, 950 CCA, 180 RC Group 31XHE heavy duty maintenance free commercial batteries
- Master disconnect switch
- Horn
- Four LED headlights in hood
- Two adjustable front and two rear/side LED work lights
- Two LED work lights in rear bumper
- Brake and indicator lights mounted in rear bumper with warning lights top of cab viewable front and rear
- 7-pin electrical trailer connector and relays
- Strobe light

OPERATOR'S STATION

- A/C /Heat cab with rear windshield wiper
- AM/FM radio, marine grade, with USB, AUX port and Bluetooth
- Electric hydraulic tilting platform improves access for transmission and hydraulic component service
- Adjustable tilt and telescopic steering column
- Leather, heated/ventilated, toggle link, semi-active suspension with fully adjustable air ride, backrest, lumbar, head and arm rests seat designed for scraper applications, 60-degree swivel right
- Fire extinguisher

Optional:

- Training seat

HYDRAULIC SYSTEM

- Open center pump for brakes and steering
- Priority hydraulic powered steering
- Open center pump for implement valve
- 91-gal pressurized hydraulic tank with 100% filtration via full flow spin-on canister type filters (91-gal capacity / 80-gal oil) and 12-inch clean out door
- 4 bank, cylinder spools, open center valve
- Accumulator for emergency braking
- Hydraulic brake ports on rear for trailer

MISC OPTIONS

- Less standard 4 bank control valve
- Six proportional switches with controller for valves on tractor or scraper
- Nine proportional switches with dual controllers for valves on tractor or scraper
- Closed center pressure comp pump with 6-bank electric control valve
- Closed center pressure comp pump with 9-bank electric control valve
- Front push bumper
- Heavy duty fixed/swinging drawbar
- Heavy duty scraper drawbar

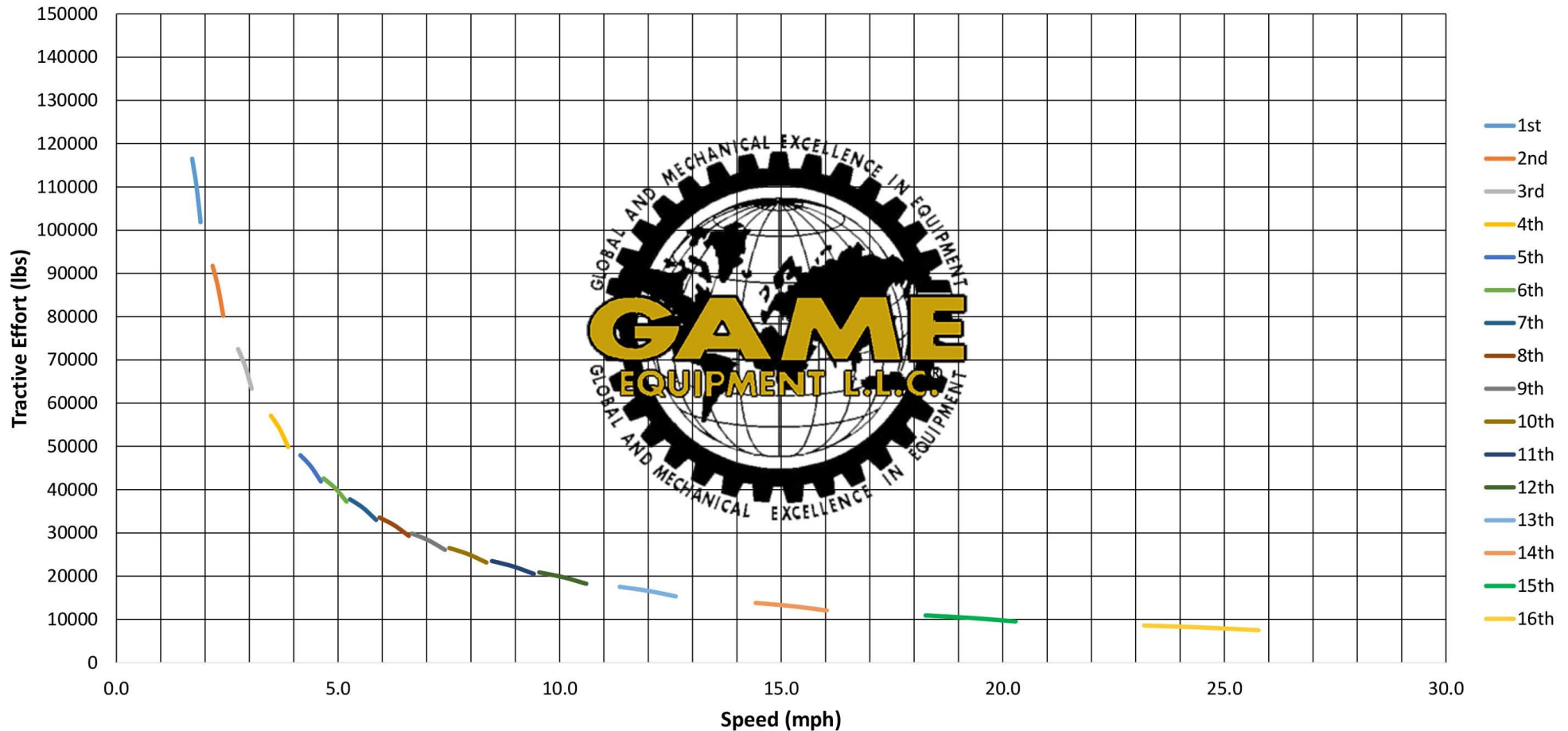
2/13/2019

GAME Equipment reserves the right to change specifications without notice. Some photos may contain optional equipment.

95ATX

4x4 TRACTOR 475HP (354KW) BULGE TO 512HP (373KW)

95 ATX Tractor Simulation
16 Speed Transmission
475/512 HP, 710/70R42 R-1W



GAME Equipment reserves the right to change specifications without notice. Some photos may contain optional equipment.