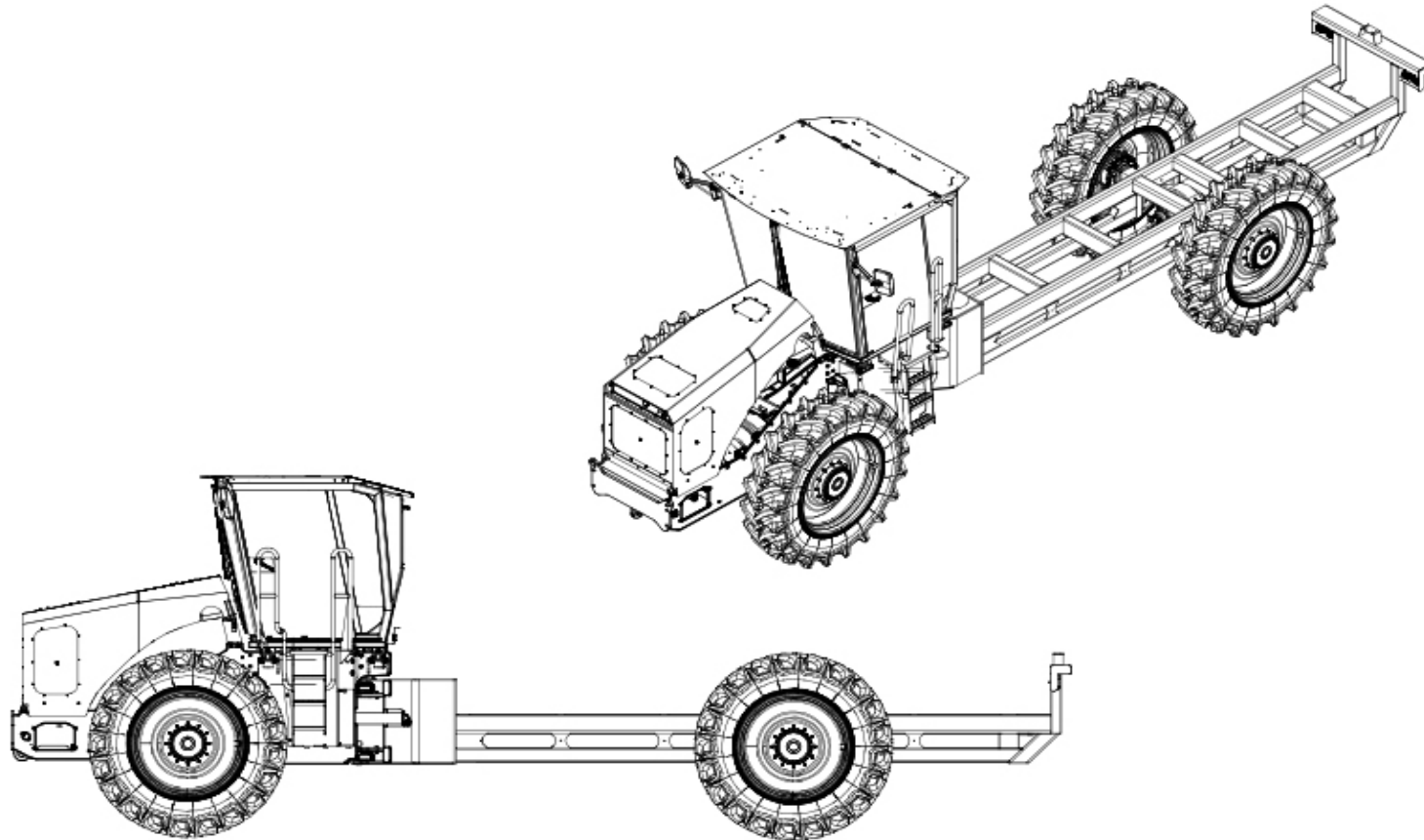


# 77AHX

4x4 ARTICULATED HAULER  
220 HP (164 KW) / 225 HP (168 KW)



77AHX 4 X 4



**GAME EQUIPMENT L.L.C.**

3322 HIGHWAY 308  
NAPOLEONVILLE, LA 70390-8904

PHONE: 985-369-9292  
FAX: 985-369-9595



THIS DRAWING AND ALL INFORMATION AND EQUIPMENT SPECIFICATIONS ARE THE PROPERTY OF GAME EQUIPMENT L.L.C. YOU MAY NOT REPRODUCE, COPIY, OR TRANSMIT ANY INFORMATION PROVIDED WITHOUT THE WRITTEN CONSENT OF GAME EQUIPMENT L.L.C.

# 77AHX

## 4x4 ARTICULATED HAULER 220 HP (164 KW) / 225 HP (168 KW)

### ENGINE

- Cummins QSB 6.7 Tier III electronic engine 220HP (164 KW) @ 2,200 RPM, 700 FT-LB (949 NM) @ 1,500 RPM
- Severe dust, dry, dual stage air cleaner with service indicator and pre-cleaner
- Fuel/water separator with secondary fuel filter
- Large tropical radiator, transmission, and hydraulic oil coolers are 8 fins/inch and rubber isolator mounted
- 80-gal (300 liter) steel fuel tank with lockable cap and 12-inch clean out door
- Manual hydraulic tilting hood allows easy cleaning of coolers and service of engine and under hood parts

### Export Only Option:

- John Deere 6068HP, 225 HP (168 KW) @ 2,400 RPM, 619 FT-LB (839 NM) @ 1,400 RPM mechanical engine, inline fuel pump

### TRANSMISSION

- Direct drive powershift transmission with bump shifter and inching pedal
- 8 forward/3 reverse gears
- Spring applied/Hydraulic release driveline parking brake
- Separate cooler/system isolates transmission from hydraulic system contamination

### AXLES

- All wheels are powered
- Heavy duty, planetary, dual reduction
- Oscillating front axle and rigid mounted rear axle
- Internal oil bath service brakes
- No spin rear. Open and limited slip front differentials

### TIRES

- (4) IF520/85R42 R2
- 76" centers
- Heavy duty one-piece rims

### CHASSIS

- Heavy duty welded frame
- Articulating joint with heavy duty radial spherical bearings and large hardened pins
- Rear frame built to accommodate 8 or 10 ton self-tipping wagon, cane planter, lime spreader and/or spray assembly
- Dual double acting heavy duty welded hydraulic steering cylinders with bushings
- Full front chassis belly pans and front pull hook
- Painted yellow gloss finish

### STANDARD EQUIPMENT

- Engine oil pressure monitoring and warning
- Engine coolant temperature monitoring and warning
- Voltage monitoring
- Fuel gauge
- Tachometer with hour meter
- Low hydraulic oil level light/indicator
- Transmission oil temperature gauge and warning
- Transmission pressure gauge and warning
- Oil filter service warning light

### ELECTRICAL

- (2) 12-VDC, 950 CCA, 180 RC Group 31XHE heavy duty maintenance free commercial batteries
- 12-Volt DC, 160-Amp alternator
- Horn, reverse alarm, & master disconnect switch
- Four LED headlights in hood
- Two front and two rear/side LED work lights
- Two LED work lights in rear
- Brake and indicator lights mounted and protected in rear
- Strobe light

### OPERATOR'S STATION

- A/C cab with rear wiper, AM/FM radio, marine grade, USB, AUX port and Bluetooth
- Vinyl mechanical suspension seat with position adjustment and armrests

- Adjustable tilt and telescopic steering column
- Manual hydraulic tilting cab platform for transmission, engine, and component service

### Optional:

- Leather, heated/ventilated, toggle link, semi-active suspension with fully adjustable air ride, backrest, lumbar, head and arm rests seat; 20-degree swivel right, 60-degree swivel left
- Training seat

### HYDRAULIC SYSTEM

- Open center pump for brakes, steering, and implement valve
- 49-gal pressurized hydraulic tank with 100% filtration and 12-inch clean out door
- Accumulator for emergency braking
- Dump valve on top side of lift cylinders with butt side plumbed to gauge for load estimate

3/29/19

*GAME Equipment reserves the right to change specifications without notice. Some photos may contain optional equipment.*

# 77AHX

4x4 ARTICULATED HAULER 220 HP (164 KW) / 225 HP (168 KW)



Tilting platform and hood provide unmatched access to engine, coolers, transmission, and under-hood and cab components. Both work via hand or electric pump, even when systems are down.

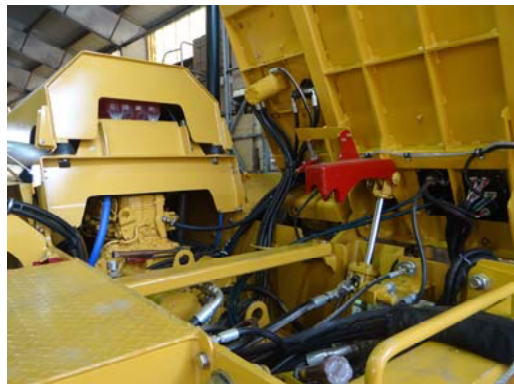


Individual gauges and indicators simplify operation, troubleshooting, and repair. Slide and fold out consoles provide industries best access for electrical service.

***GAME tractors are designed and manufactured from the ground up for the most demanding conditions the world has to offer. Industrial frames, belly pans, drivelines, powertrain components, and hitches are standard.***



Engine and transmission coolers with 8 fins per inch spacing reduce buildup of debris. Hood rolls up for easy cleaning.



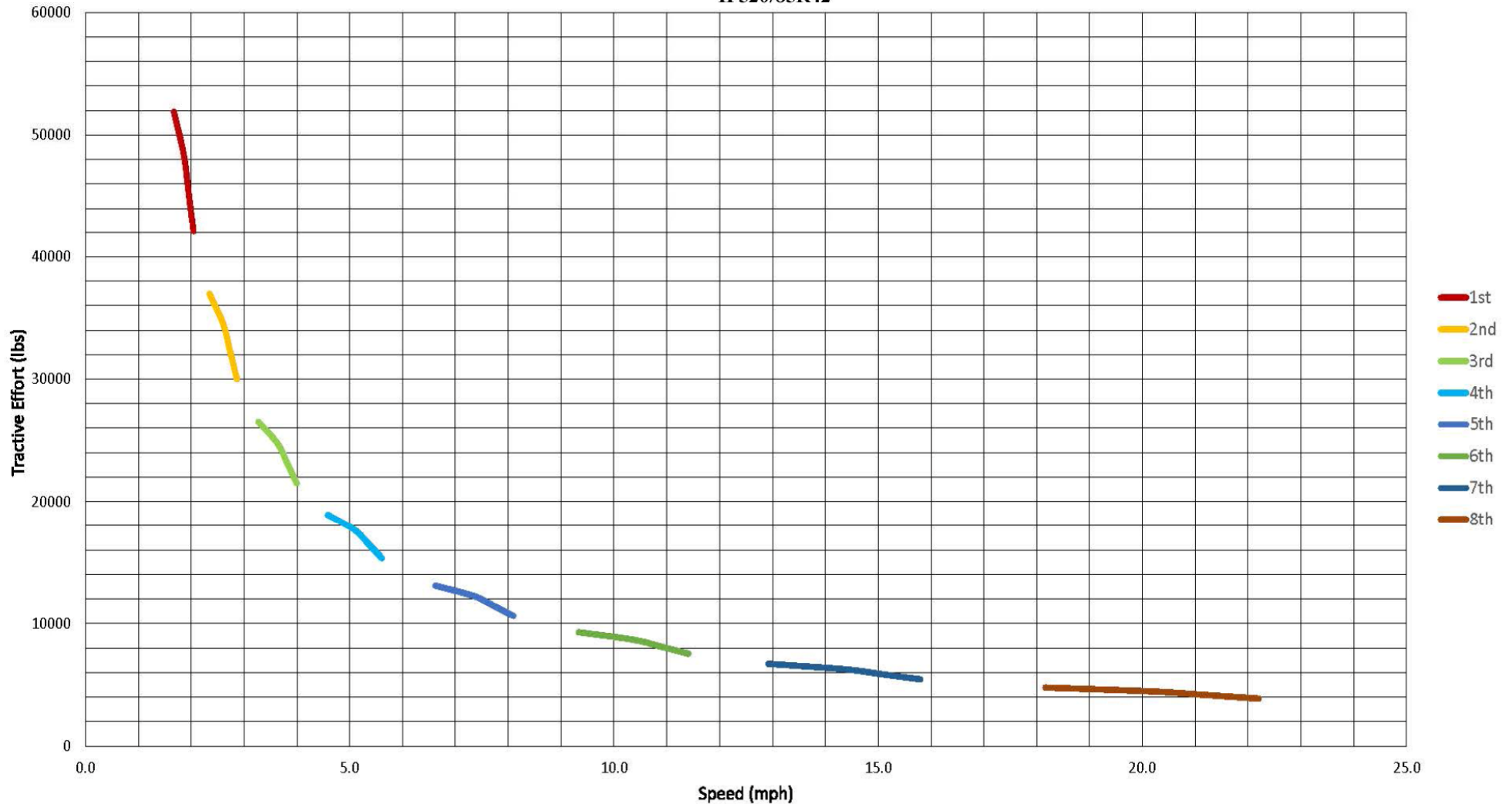
Simple electrical system with ease of access from the operators seat.

*GAME Equipment reserves the right to change specifications without notice. Some photos may contain optional equipment.*

# 77AHX

4x4 ARTICULATED HAULER 220 HP (164 KW) / 225 HP (168 KW)

77 AHX GAME HAULER  
CUMMINS QSB6.7, 8 SPD TRANSMISSION  
IF520/85R42



GAME Equipment reserves the right to change specifications without notice. Some photos may contain optional equipment.