

67MTX

4x4 TRACTOR
160 HP (119 KW) / 170 HP (127 KW)

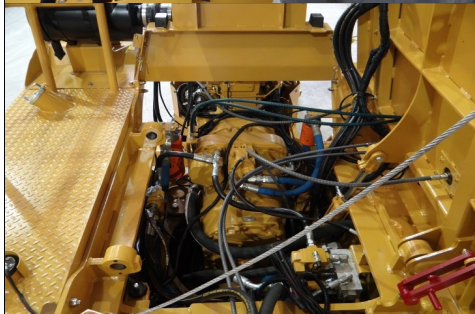


Game Equipment LLC 3322 Hwy 308 Napoleonville, LA USA 70390-8904 Ph: 985-369-9292 Fax: 985-369-9595 www.gameeq.com

67MTX 4x4 TRACTOR 160 HP (119 KW) / 170 HP (127 KW)



Engine and transmission coolers with 8 fins per inch spacing reduce buildup of debris. Hood rolls up for easy cleaning.



Tilting platform and hood provide unmatched access to engine, cooler and cab components. Both work via hand pump even when systems are down.



Individual gauges and indicators simplify operation, troubleshooting, and repair.

GAME tractors are designed and manufactured from the ground up for the most demanding conditions the world has to offer. Industrial frames, belly pans, drivelines, powertrain components, and hitches are standard.



Hood profile provides excellent visibility.



Built to withstand extreme applications, the frame accommodates multiple hitch configurations for high weight transfer, winches, and other equipment.

GAME Equipment reserves the right to change specifications without notice. Some photos may contain optional equipment.

67MTX 4x4 TRACTOR 160 HP (119 KW) / 170 HP (127 KW)

ENGINE

- Cummins QSB4.5, US EPA Tier III, EU Stage III electronic engine, 160HP (119 KW) @ 2,200 RPM with 168 HP (125 KW) @ 2,000 RPM bulge, Peak torque of 460 FT-LB (624 NM) @ 1,500 RPM
- Severe dust, dry dual stage air cleaner with service indicator and pre-cleaner
- Fuel/water separator with secondary fuel filter
- Large tropical radiator, transmission, and hydraulic oil coolers are 8 fins/inch and rubber isolator mounted
- 90-gal (340 liter) steel fuel tank with lockable cap and 12-inch clean out door
- Manual hydraulic tilting hood allows easy cleaning of coolers and service of engine and under hood parts

Export Only Option:

- John Deere 6068, 170HP (127 KW) @ 2,500 RPM, 447 LB-FT (606 NM) @ 1,200 RPM, mechanical fuel injection system

TRANSMISSION

- Heavy duty industrial, lock-up converter driven, mechanically controlled power shift. No electric solenoids, levers in cab shift transmission spools via mechanical cables
- Upshifts and downshifts while moving without foot actuated clutch. Multi disc clutch packs immersed in oil are oil actuated by shifts of manually actuated spools
- Independent oil cooler and system isolates contamination from all other sources providing long transmission life
- 4 forward and 4 reverse gears
- Independent mechanical driveline parking brake

Optional:

- 6-speed converter driven, electronically controlled powershift and automatic transmission

AXLES

- All wheels are powered
- Heavy duty, outboard planetary, dual reduction
- Ring and pinion reduction with planetary final drives
- No spin "Detroit locker" rear differential
- Internal oil bath service brakes
- Heavy duty mechanics drivelines

CHASSIS

- Heavy duty welded frame
- Double acting heavy duty hydraulic cylinder for steering
- Belly pans and front pull hook
- Painted with yellow gloss finish

STANDARD EQUIPMENT

- Engine oil pressure gauge and indicator
- Engine coolant temperature gauge and indicator
- Voltage gauge
- Fuel gauge
- Tachometer with hour meter
- Hand and foot throttle
- Low hydraulic oil level light/indicator
- Transmission oil temperature gauge and indicator
- Transmission pressure gauge and indicator
- Oil filter service warning light/indicator

ELECTRICAL

- (2) 12-VDC, 950 CCA, 180 RC Group 31XHE heavy duty maintenance free commercial batteries
- 12-Volt DC, 160-Amp alternator
- Horn, reverse alarm, and master disconnect switch
- Three LED headlights in hood
- Two adjustable front and two rear/side LED work lights
- Two LED work lights in rear bumper
- Brake and indicator lights in rear bumper with warning lights top of cab (viewable front and rear)
- Strobe light

OPERATOR'S STATION

- Open station with welded steel canopy top
- Vinyl mechanical suspension seat with position adjustment and armrests
- Adjustable tilt and telescopic steering column
- Manual hydraulic tilting platform

Optional:

- ROPS certified A/C cab with rear wiper, with AM/FM radio, marine grade, USB, AUX port and Bluetooth
- Training seat

- Leather, heated, toggle link fully adjustable air ride suspension seat with armrests, 20-degree swivel right, 60-degree swivel left
- Electric cab/hood tilt

HYDRAULIC SYSTEM

- Open center pump for brakes, steering, and implement valve
- 39-gal pressurized hydraulic tank with 100% filtration and 12-inch clean out door
- 2 bank, cylinder spools, open center valve
- Accumulator for emergency braking

MISC OPTIONS

- Cable operated 4-bank control valves
- Air compressor, tank, trailer park and service brakes via foot & lever
- 7-pin electrical connector capable of multiple trailer operation
- Hydraulic brake ports on rear for trailer
- Heavy duty fixed/swinging drawbar
- Welded rear extension with pintle hook
- Category III, 3-point hitch
- PTO
- Front push bumper
- Fire extinguisher

TIRES

- 18.4X30, R1, 8 PLY front and rear tires
- 78.5" (1.99M) track
- Heavy duty one piece rims

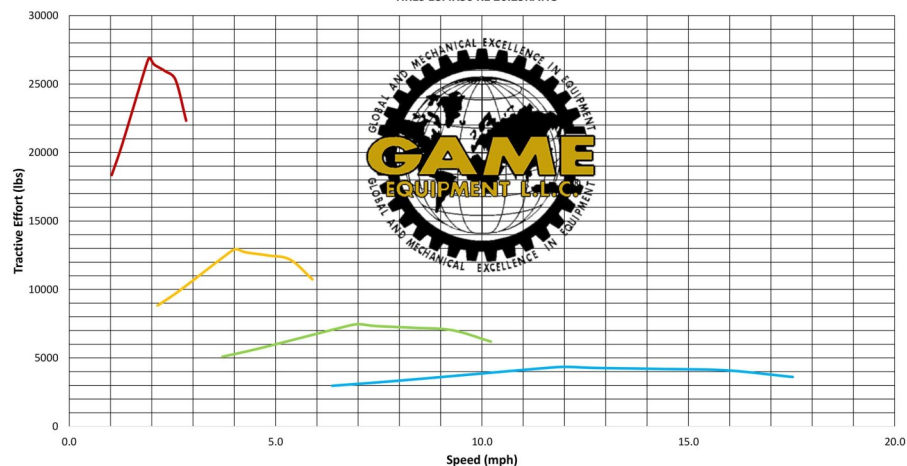
Optional:

- 460/85R30, R-1W
- 18.4X30, R2, 10 PLY
- 18.4X34, R1, 8 PLY (export only)
- 460/85R34, R-1W (export only)
- 18.4X34, R2, 12 PLY (export only)

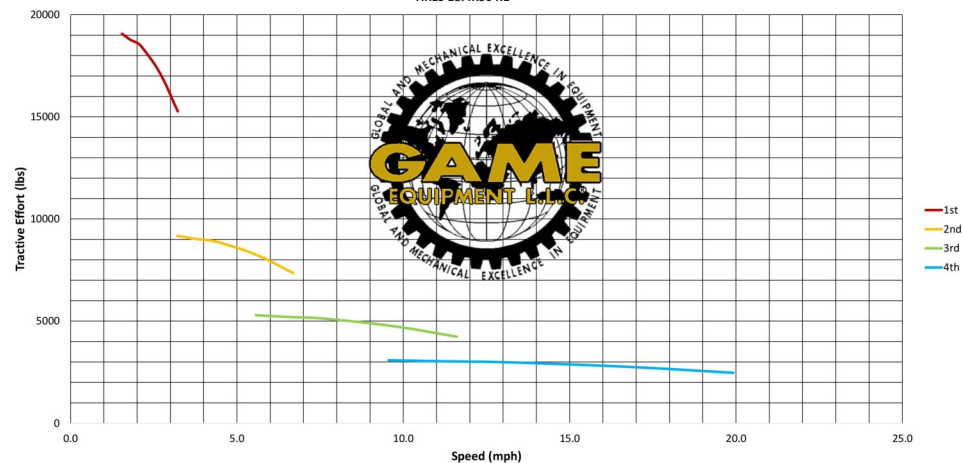
GAME Equipment reserves the right to change specifications without notice. Some photos may contain optional equipment.

67MTX 4x4 TRACTOR 160 HP (119 KW) / 170 HP (127 KW)

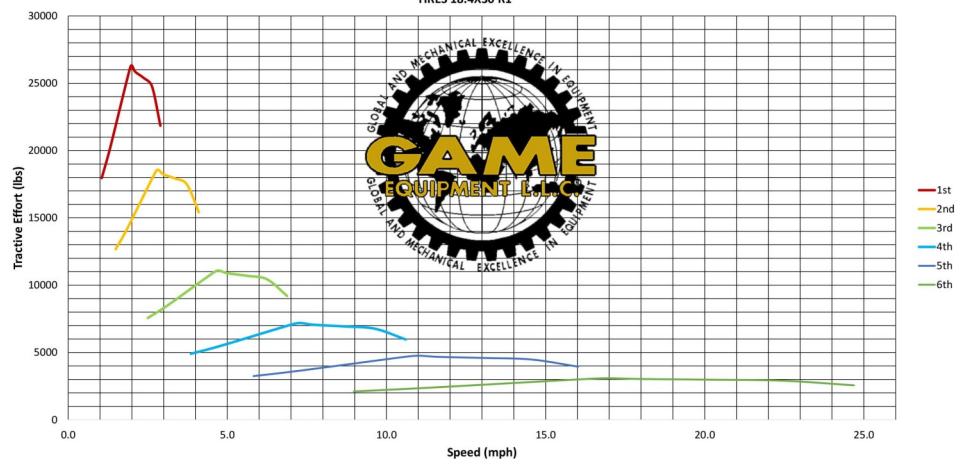
GAME 67MTX TRACTOR
160HP/4 SPEED
TIRES 18.4X30 R1 26.25RATIO



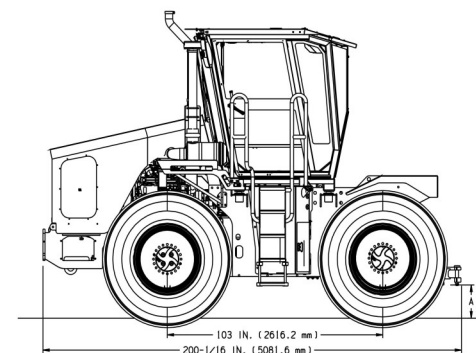
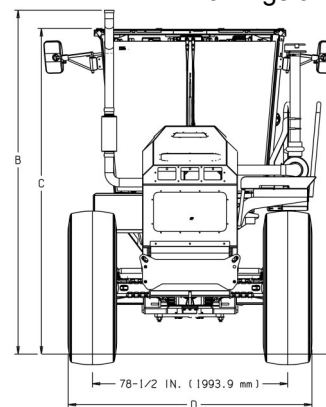
GAME 67MTX TRACTOR
170HP/4 SPEED MANUAL POWER SHIFT TRANSMISSION
TIRES 18.4R30 R1



GAME 67MTX TRACTOR
160HP/6 SPEED
TIRES 18.4X30 R1



Drawings are shown on the standard tire



Specifications:

Unladen Tractor Weight.....17,000 - 19,000 LBS (7,711 - 8,615 KG)

Unladen Weight Distribution62% Front Axle 38% Rear Axle

Standard Weight.....17,762 LBS with cab, drawbar, & tires above

Tires18.4X30, R1, 8 PLY front and rear @ 78.5" track

Steering.....Inner Turning Radius 180" 4572 MM)

STANDARD TIRE SIZE	A—IN(MM)	B—IN(MM)	C—IN(MM)	D—IN(MM)
18.4X30, R1, 8PLY	15.1 (383.5)	135.4 (3439.2)	131.0 (3327.4)	96.9 (2461.3)

GAME Equipment reserves the right to change specifications without notice. Some photos may contain optional equipment.