

79FTX

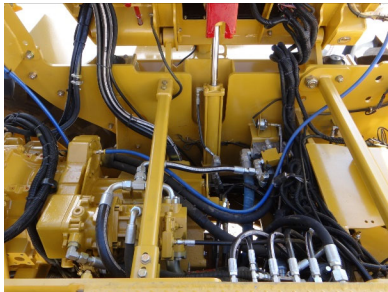
4x4 TRACTOR
280 HP (209 KW)



Game Equipment LLC 3322 Hwy 308 Napoleonville, LA USA 70390-8904 Ph: 985-369-9292 Fax: 985-369-9595 www.gameeq.com

79FTX

4x4 TRACTOR 280 HP (209 KW)



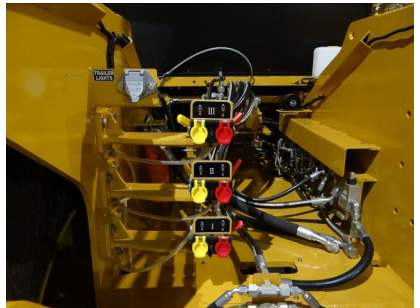
Tilting platform and hood provide unmatched access to engine, coolers, transmission, and under-hood and cab components. Both work via hand or electric pump, even when systems are down.



Engine and transmission coolers with 8 fins per inch spacing reduce buildup of debris. Hood rolls up for easy cleaning.



Modular Armrest with ergonomic operator controls



Built to withstand extreme applications, the frame accommodates multiple hitch configurations for high weight transfer, winches, and other equipment.

GAME tractors are designed and manufactured from the ground up for the most demanding conditions the world has to offer. Heavy-duty industrial frames, belly pans, drivelines, powertrain components, and hitches are standard.



Hood profile provides excellent visibility.



GAME Equipment reserves the right to change specifications without notice. Some photos may contain optional equipment.

79FTX

4x4 TRACTOR 280 HP (209 KW)

ENGINE

Cummins QSB 6.7, Stage V/ Final Tier IV electronic engine, 280HP (209 KW) @ 2,000 RPM with 850 FT-LB of torque (949 NM) @ 1,500 RPM
Severe dust, dry, dual stage air cleaner with service indicator and pre-cleaner
Fuel/water separator with secondary fuel filter
Large tropical radiator, transmission, and hydraulic oil coolers are 8 fins/inch and rubber isolator mounted
100-gal (455-liter) steel fuel tank with lockable cap and 12-inch clean out door
Manual hydraulic tilting hood allows easy cleaning of coolers and service of engine and under hood parts

TRANSMISSION

- Direct drive powershift transmission with bump shifter and inching pedal
- 11 forward/3 reverse gears
- Spring applied/Hydraulic release driveline parking brake
- Separate cooler/system isolates transmission from hydraulic system contamination

AXLES

- All wheels are powered
- Heavy duty, outboard planetary, dual reduction axles
- Ring and pinion reduction with planetary final drives
- Front oscillating and rear rigid axles
- Internal oil bath service brakes
- Hydraulically actuated differential locking front axle

TIRES

- (2) 520/85R46 R2 Radials (rear)
- (2) 340/85R46 R2 Radials (front)
- Heavy duty one-piece rims

CHASSIS

- Heavy duty welded frame
- Dual, double acting, heavy duty welded hydraulic cylinders for steering
- Belly pans and front pull hook
- Painted with yellow gloss finish

STANDARD EQUIPMENT

- Engine oil pressure gauge and indicator
- Engine coolant temperature gauge and indicator
- Voltage gauge
- Fuel gauge
- Tachometer with hour meter
- Low hydraulic oil level light/indicator
- Transmission oil temperature gauge and indicator
- Transmission pressure gauge and indicator
- Oil filter service warning light

ELECTRICAL

- (2) 12-VDC, 950 CCA, 180 RC Group 31XHE heavy duty maintenance free commercial batteries
- 12-Volt DC, 160-Amp alternator
- Horn, reverse alarm, and master disconnect switch
- Four LED headlights in hood
- Two adjustable front and two rear/side LED work lights
- Two LED work lights in rear bumper
- Brake and indicator lights in rear bumper with warning lights top of cab (viewable front and rear)
- Strobe light
- 7-pin electrical connector capable of multiple trailer operation

OPERATOR'S STATION

- ROPS/FOPS certified A/C cab with rear wiper
- AM/FM radio, marine grade, with USB, AUX port and Bluetooth
- Manual hydraulic tilting cab platform for transmission, engine, and component service
- Adjustable tilt and telescopic steering column
- Vinyl cushion mechanical suspension seat with position adjustment and armrest
- 12" Touch Screen Display
- Modular Armrest with ergonomic operator controls

Optional:

- Leather, heated/ventilated, toggle link, semi-active suspension with fully adjustable air ride, backrest, lumbar, head and arm rests seat; 20-degree swivel right, 60-degree swivel left
- Electric cab/hood tilt
- Training seat
- (2) 710/70R42, R-1W (Rear)
- Hydraulically actuated heavy duty differential locking rear axle with independent right or left actuated brakes

HYDRAULIC SYSTEM

- 39-gal (148 L) pressurized hydraulic tank with 100% filtration and 12-inch clean out door
- Electric 6-bank valve with capability to change flows on the fly.
- Hydraulic brakes with accumulator to provide braking during engine down emergencies

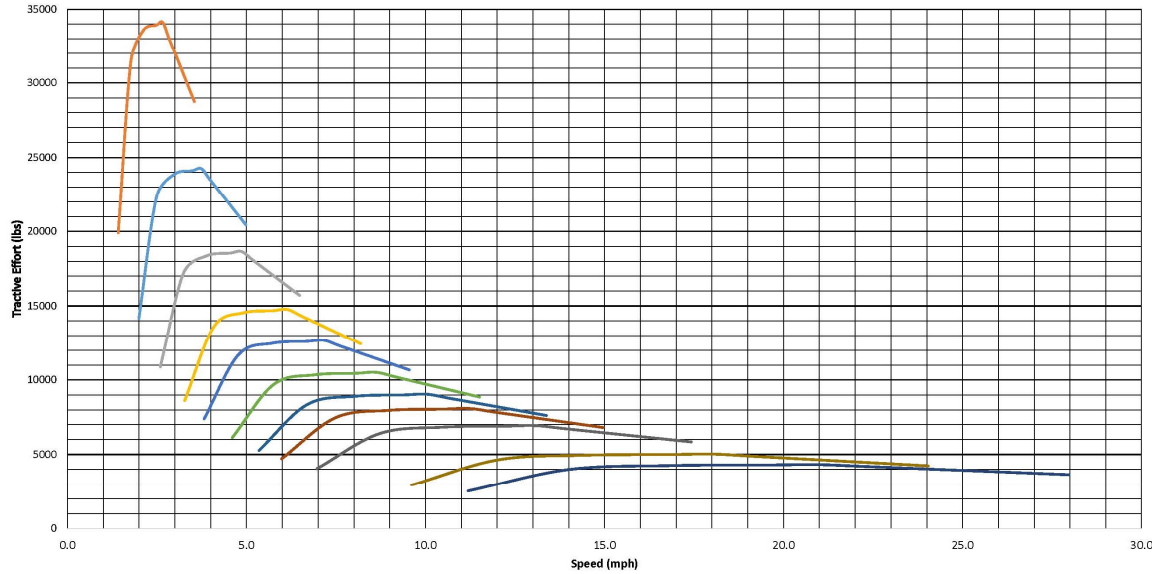
MISC OPTIONS

- Hydraulic brake ports on rear for trailer
- Front push bumper
- Heavy duty fixed drawbar
- Welded rear extension with pintle hook
- Category III, 3-point hitch with float and draft assist
- PTO
- Fire extinguisher

GAME Equipment reserves the right to change specifications without notice. Some photos may contain optional equipment.

79FTX 4x4 TRACTOR 280 HP (209 KW)

GAME 79FTX TRACTOR
 Stage V 6.7 280Hp @2000rpm 11sp DF250
 340/85R46 & 520/85R46



Specifications:

Unladen Tractor Weight Est.

Unladen Weight Distribution

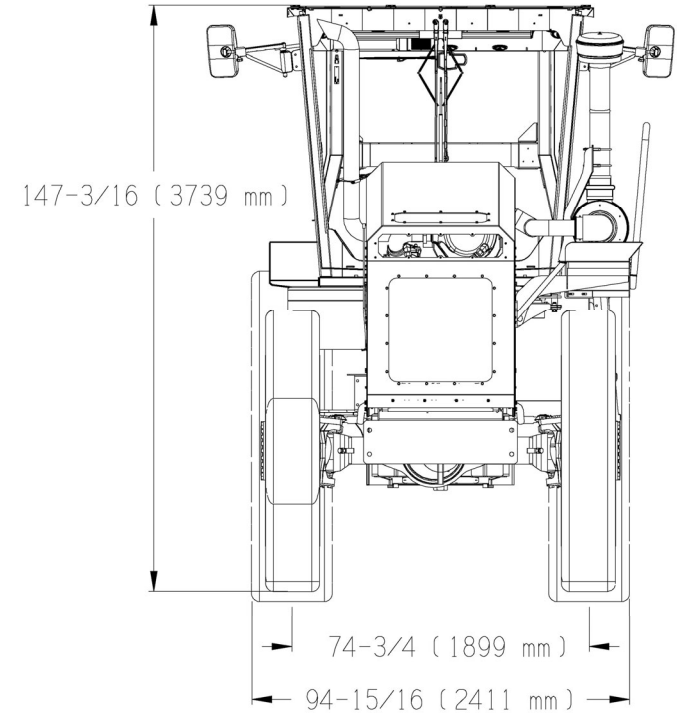
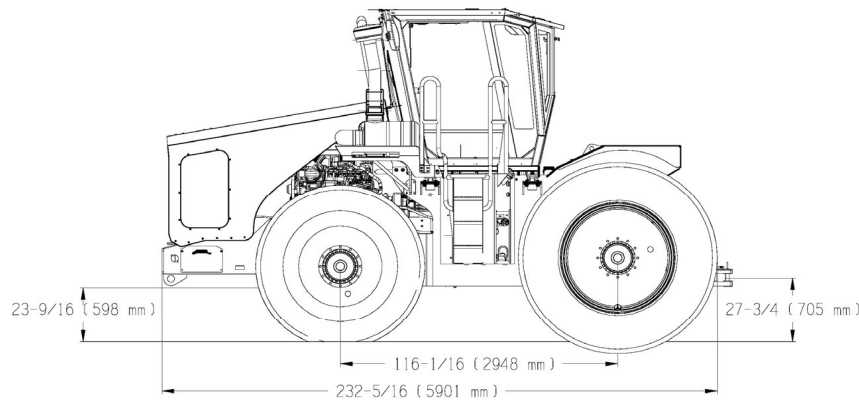
Steering Est.

23,000–26,000 lbs (10,432 - 11,793 kg)
 58% Front Axle 42% Rear Axle
 Inner Turning Radius: 180" (4572 mm) 153"
 W/Brake (3886 mm)
 Outer Turning Radius: 302" (7670 mm)

Shipping

Export - 1 Tractor per standard high cube 40' container
Domestic - Assembled tractor ships via trailer.

- 1st
- 2nd
- 3rd
- 4th
- 5th
- 6th
- 7th
- 8th
- 9th
- 10th
- 11th



4/19/2021

GAME Equipment reserves the right to change specifications without notice. Some photos may contain optional equipment.